



# Sheringham Shoal and Dudgeon Offshore Wind Farm Extension Projects

Environmental Statement

## Volume 2

### Chapter 26 - Landscape and Visual Impact Assessment

August 2022

Document Reference: 6.2.26

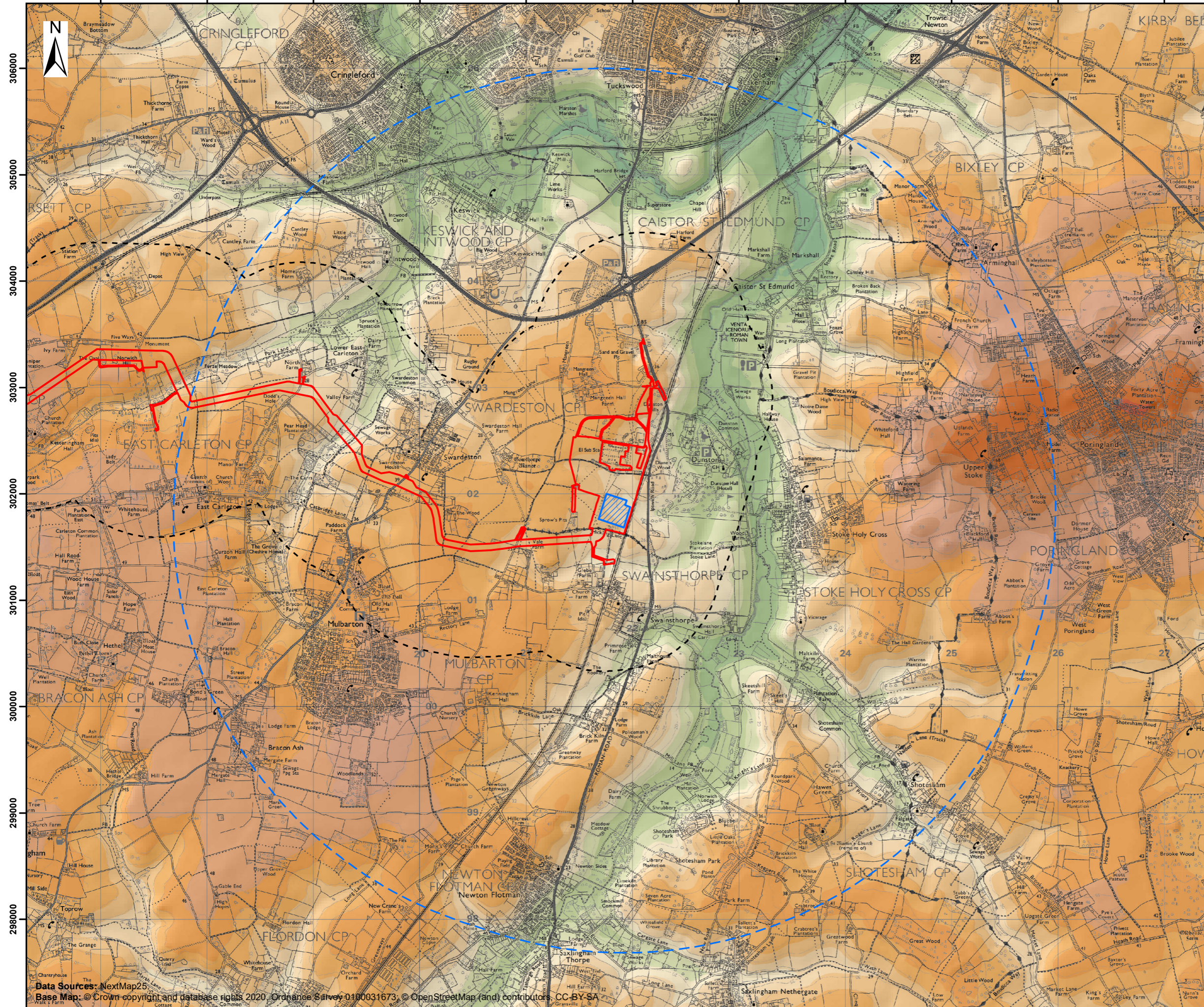
APFP Regulation: 5(2)(a)

Title: <b>Sheringham Shoal and Dudgeon Offshore Wind Farm Extension Projects                  Environmental Statement (Volume 2)                  Chapter 26: Landscape and Visual Impact Assessment Figures (Part 4 of 20)</b>	
PINS Document No.: 6.2.26	
Document No.: C282-RH-Z-GA-00004	
Date: <b>August 2022</b>	
Classification: <b>Final</b>	
Prepared by: <b>Royal HaskoningDHV</b>	
Approved by: <b>Sarah Chandler, Equinor</b>	Date: August 2022

### List of Figures

- 26.14: Topography
- 26.15: Zone of Theoretical Visibility (ZTV) Study and Viewpoint Locations
- 26.16: Onshore Substation Aerial Photograph

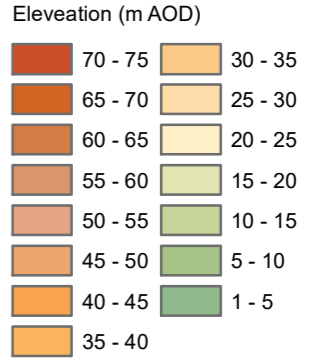
617000 618000 619000 620000 621000 622000 623000 624000 625000 626000 627000



# Sheringham Shoal and Dudgeon Extension Projects

Title: Figure 26.14 Topography  
 Document: Environmental Statement (ES) Chapter 26 Landscape and Visual Impact Assessment  
 Application Doc. no.: 6.2.26

- Legend:
- Order Limits
  - 1km study area from Order Limits (onshore)
  - Onshore Substation Site
  - Onshore Substation Site 4km study area

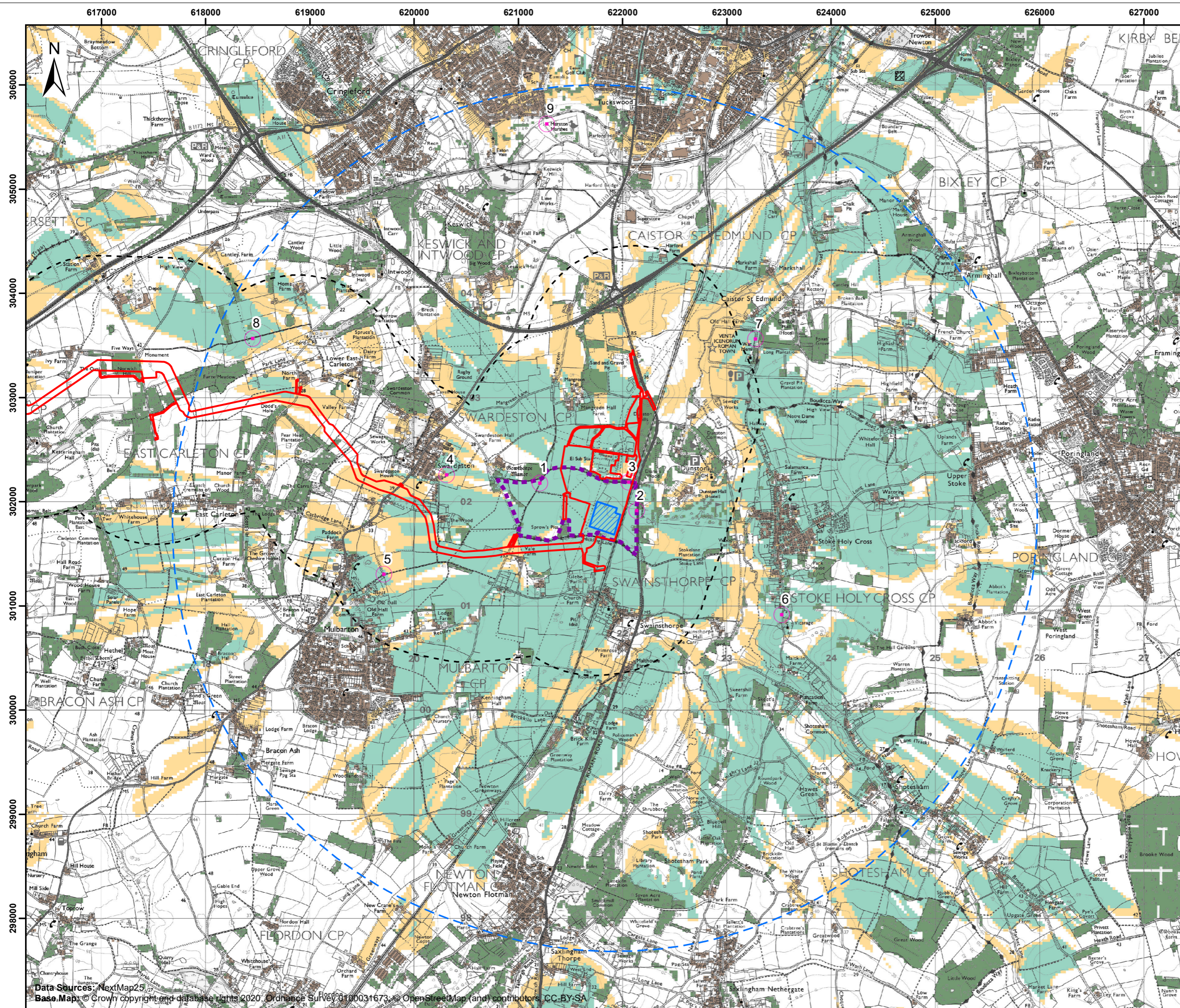


Coordinate Reference System: British National Grid  
 Transformation WGS84: OSGB\_1936\_To\_WGS\_1984\_7

Scale: 1:35,000      Scale at size: A3  
 Equinor Doc. no.: C282-LD-Z-GA-00004  
 RHDHV Doc. no.: PB8164\_LDA\_ZZ\_ON\_DR\_Z\_0049

REV	DATE	STATUS	DRW	CHK	APR
A	06/07/2022	First Issue	VW	NA	CG

Data Sources: NextMap25  
 Base Map: © Crown copyright and database rights 2020. Ordnance Survey 0100031673. © OpenStreetMap (and) contributors. CC-BY-SA



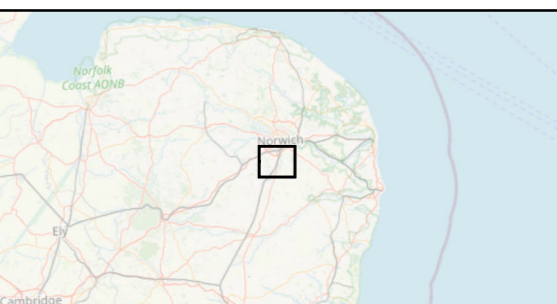
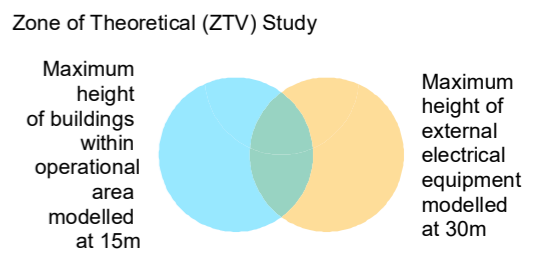
# Sheringham Shoal and Dudgeon Extension Projects

Title: Figure 26.15  
 Zone of Theoretical Visibility (ZTV) Study and Viewpoint Locations Proposed Substation

Document: Environmental Statement (ES)  
 Chapter 26 Landscape and Visual Impact Assessment

Application Doc. no.: 6.2.26

- Legend:
- Order Limits
  - 1km study area from Order Limits (onshore)
  - Onshore Substation Site
  - Onshore Substation Site 4km study area
  - Settlement
  - Woodland
  - Representative Viewpoints for Landscape and Visual Impact Assessment
  - Zone of Visual Influence (ZVI) – based on site observations



Coordinate Reference System: British National Grid  
 Transformation WGS84: OSGB\_1936\_To\_WGS\_1984\_7

Scale: 1:35,000      Scale at size: A3

Equinor Doc. no.: C282-LD-Z-GA-00004  
 RHDHV Doc. no.: PB8164\_LDA\_ZZ\_ON\_DR\_Z\_0050

A	06/07/2022	First Issue	VW	NA	CG
REV	DATE	STATUS	DRW	CHK	APR

Data Sources: NextMap25, BaseMap © Crown copyright and database rights 2020, Ordnance Survey 100031673, © OpenStreetMap (and) contributors, CC-BY-SA



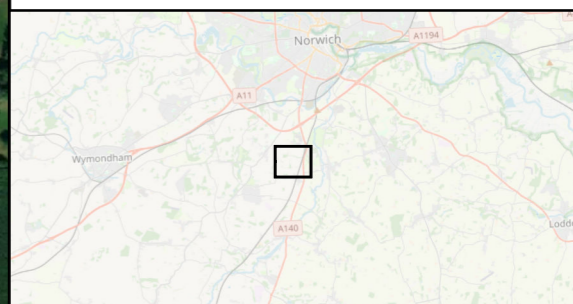
# Sheringham Shoal and Dudgeon Extension Projects

Title: Figure 26.16  
Onshore Substation Site Aerial Photograph

Document: Environmental Statement (ES)  
Chapter 26 Landscape and Visual Impact Assessment

Application Doc. no.: 6.2.26

- Legend:
- Order Limits
  - Onshore Substation Site
  - Footpath / bridleway (assumed to be permissive bridleway)
  - Footpath
  - Bridleway
  - Byway Open to All Traffic
  - Representative Viewpoints for Landscape and Visual Impact Assessment



Coordinate Reference System: British National Grid  
Transformation WGS84: OSGB\_1936\_To\_WGS\_1984\_7

0 0.15 0.3 km  
0 0.1 0.2 Miles

Scale: 1:6,000 Scale at size: A3

Equinor Doc. no.: C282-LD-Z-GA-00004  
RHDHV Doc. no.: PB8164\_LDA\_ZZ\_ON\_DR\_Z\_0051

A	06/07/2022	First Issue	VW	NA	CG
REV	DATE	STATUS	DRW	CHK	APR

Data Sources: Norfolk County Council.  
Base Map: © Crown copyright and database rights 2020, Ordnance Survey 0100031875, © OpenStreetMap (and) contributors, CC-BY, Imagery © Mapbox